



IDEAL ELECTRIC Co.

TELEPHONE (419) -520-3245

FAX (419)- 522-8427

Aftermarket Service Department

SERVICE BULLETIN

FAN BAFFLE AIR PRESSURE HOSE ASSEMBLY

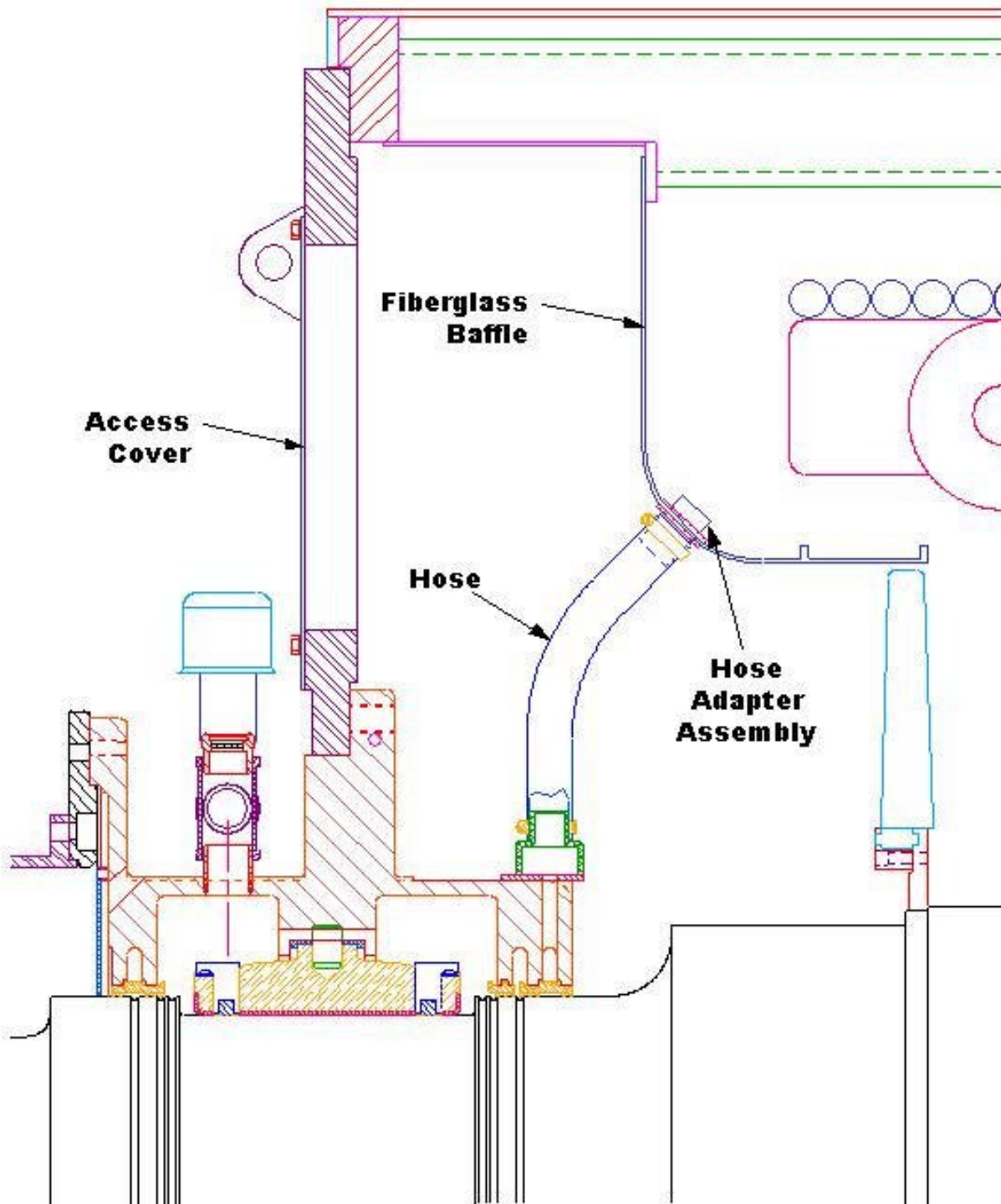
On Ideal motors and generators that have fiberglass fan baffles and pressurized inboard bearing seals, the air pressure hose connection to the baffle needs to be checked during the routine annual inspection.

This inspection does not require any major disassembly of the unit.

Referring to the drawing on the following page to identify the components:

1. Remove the D.E. and O.D.E. access covers to expose the air pressure hose connecting the fiberglass fan baffle to the bearing housing.
2. Remove the clamp securing the hose to the hose adapter assembly.
3. The plastic nipple component of this assembly is secured to the baffle with two jam nuts. One on each side of the baffle.
4. Check that these nuts are tight and that the nipple is secured.
5. If the plastic nipple is loose, remove it from the baffle and check that it has not been damaged. If loose the baffle will have a tendency to cut through the nipple, as the air movement will cause this to vibrate and possibly shear off.
6. If the nipple is damaged replace it with new nipple.
7. Ensure that the jam nuts that secure this to the baffle are tight.
8. To ensure that the nuts do not work loose, run a bead of two-part epoxy around the nuts to adhere them to the baffle.
9. It maybe necessary to remove the top half of the baffle to allow access to the inner jam nut.

If there are any questions concerning this part of the annual inspection of your unit, contact the Field Service Manager at 419-520-3245 or 419-522-3611.



03-10-2006 cve